

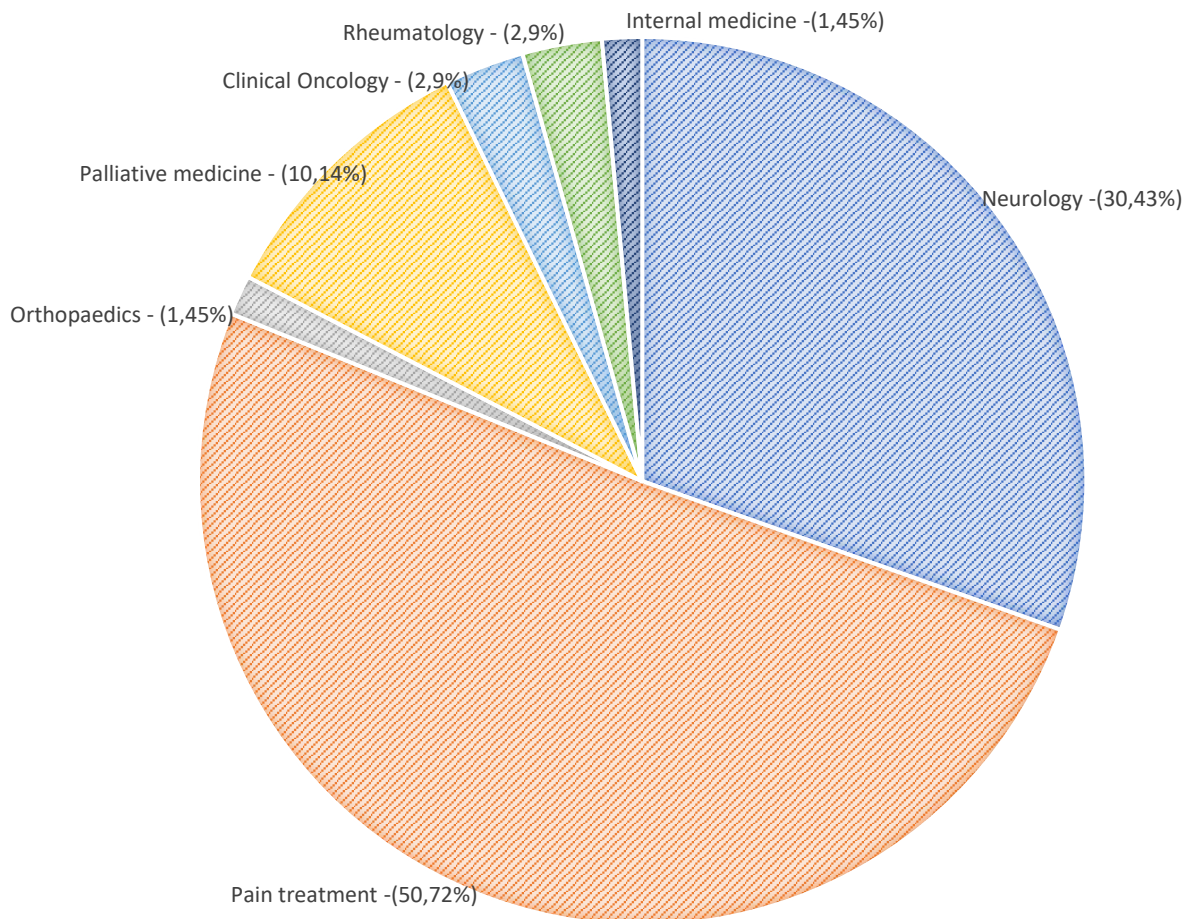
Selected statistical outputs for the year 2022

Monitoring period: from January 1st, 2021 to December 31st, 2022

Number of submitted reports: 2790

1. Number of physicians who submitted reports according to their specialization

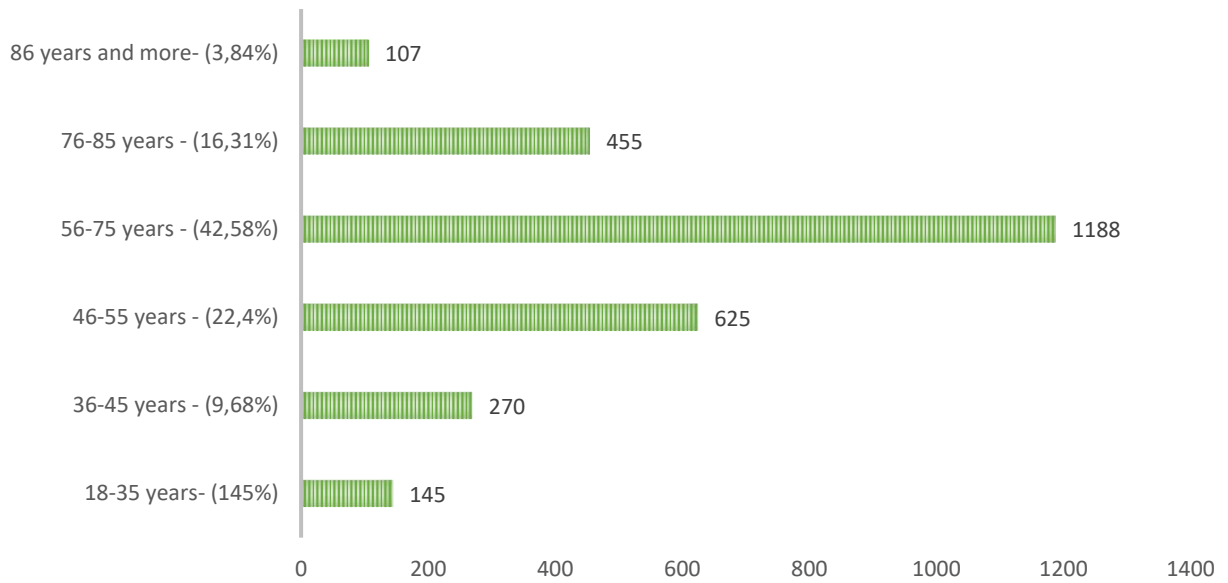
NUMBER OF PHYSICIAN



* If a doctor reports under more than one specialization, it will be included in the number of physicians who have submitted reports according to their specialization more than one time.

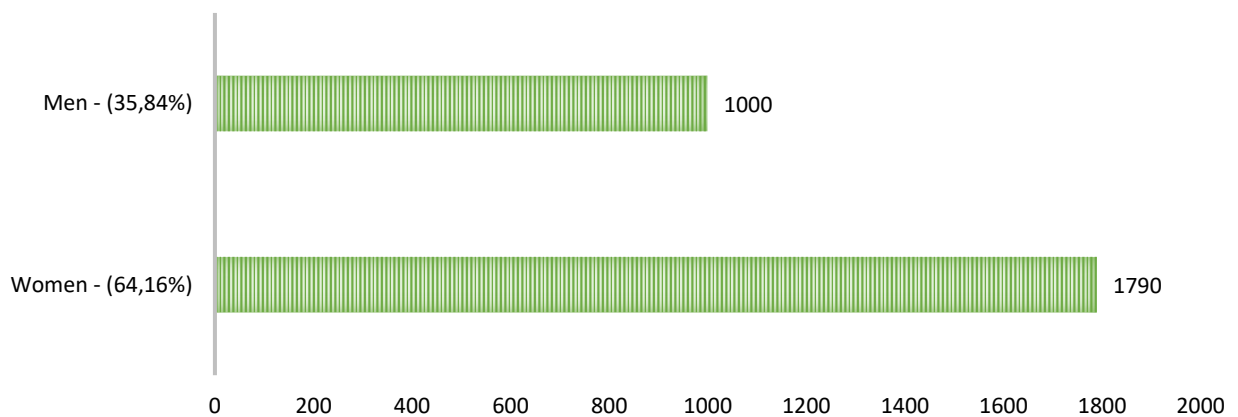
2. Number of patients according to age groups

NUMBER OF PATIENTS ACCORDING TO AGE GROUPS



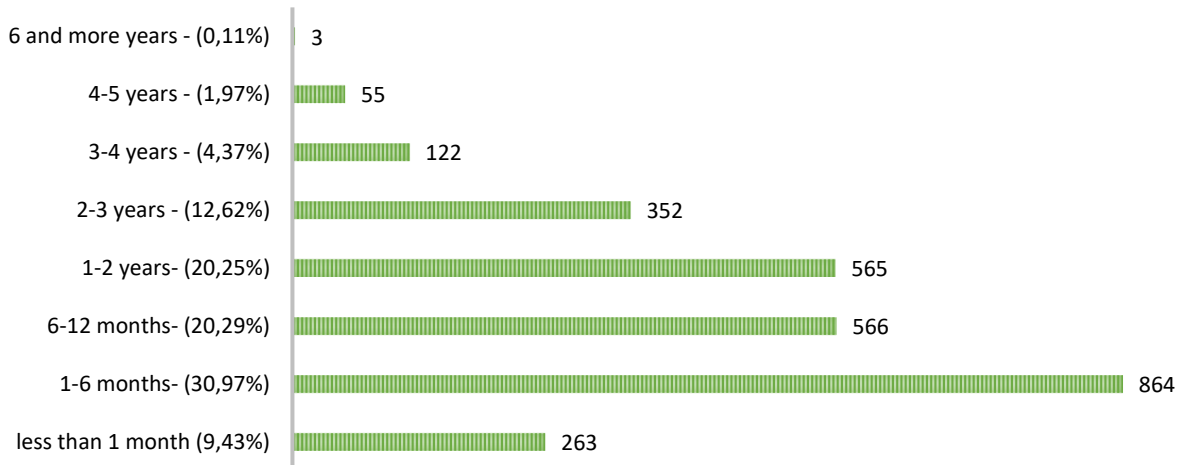
3. Number of patients according to gender

NUMBER OF PATIENTS ACCORDING TO A GENDER



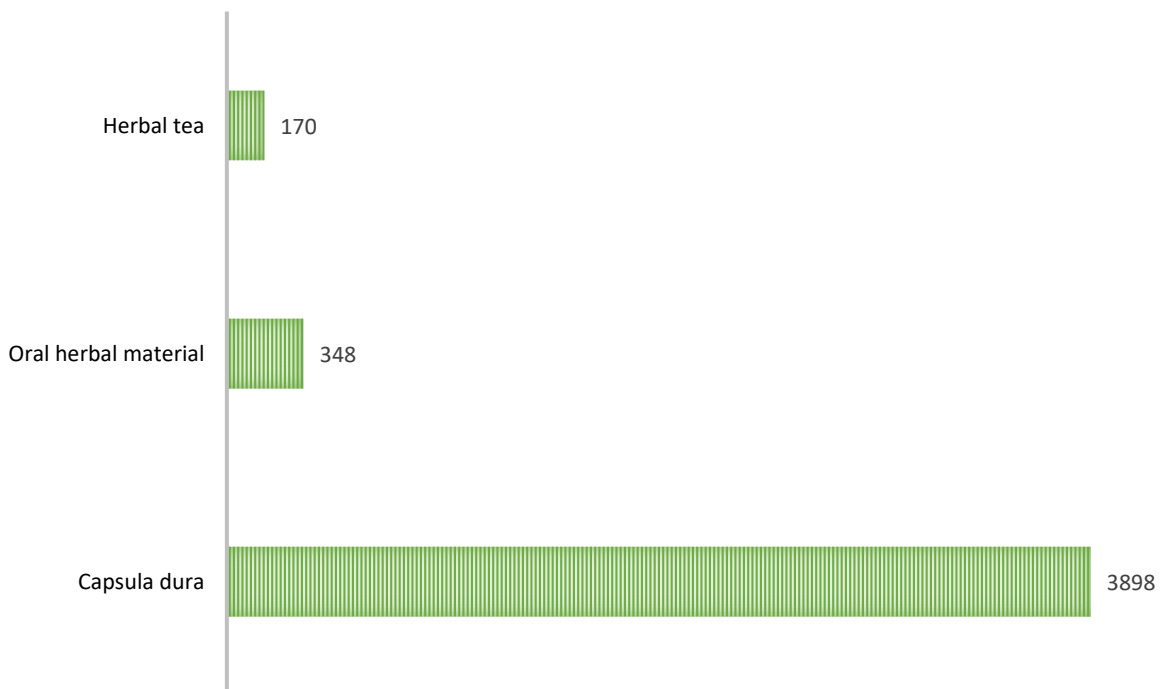
4. Duration of treatment of patients with medical cannabis

DURATION OF TREATMENT OF A PATIENT WITH MEDICAL CANNABIS



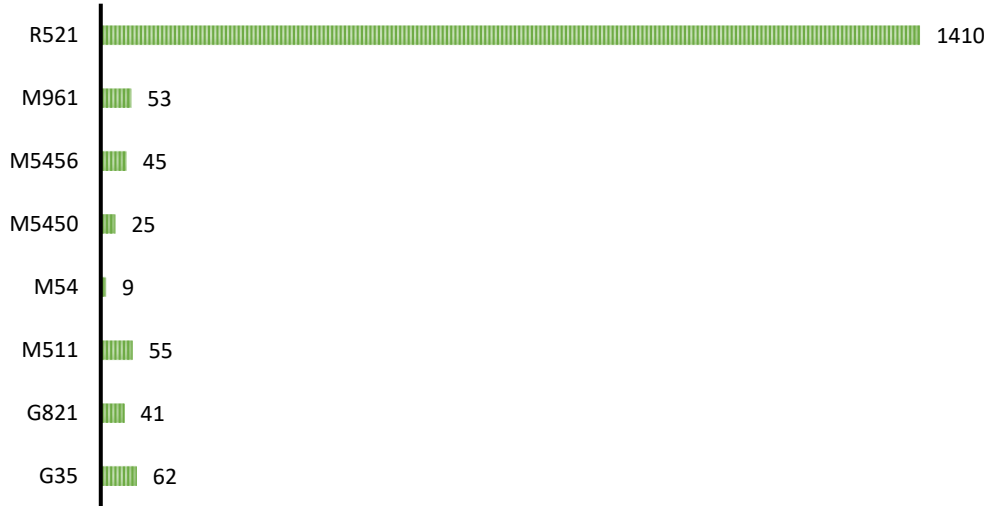
5. Three most common prescribed dosage forms of medical cannabis

DOSAGE FORMS



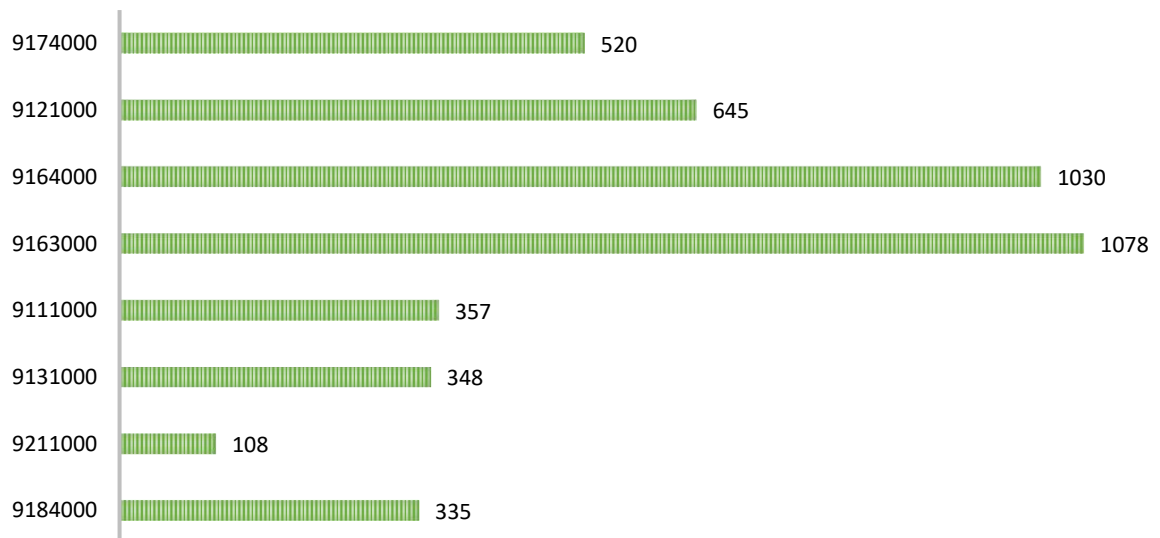
6. Eight most common diagnoses for which medical cannabis was prescribed (number of times medical cannabis use was prescribed for a given diagnosis)

DIAGNOSIS



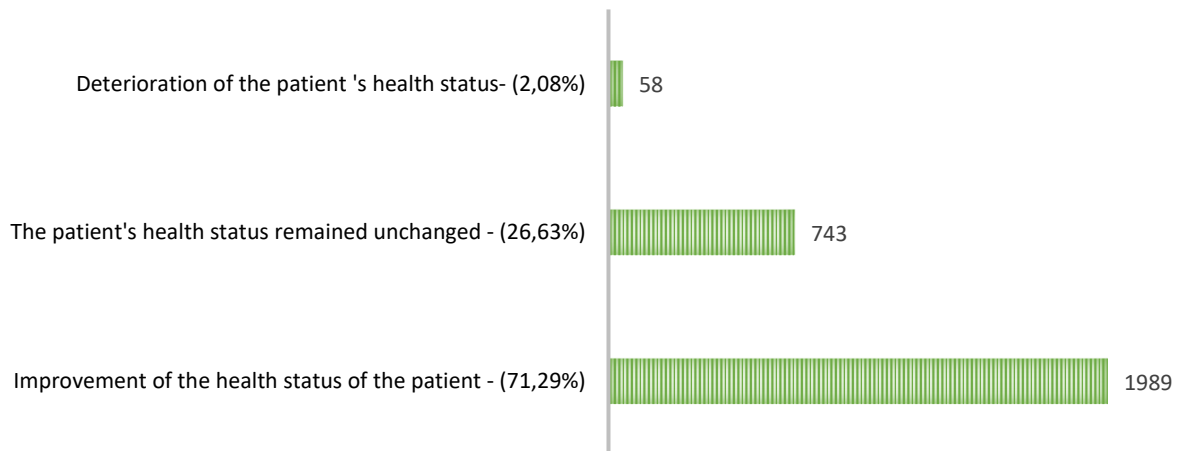
7. Eight most common codes for which medical cannabis was prescribed (number of times a medical cannabis code was prescribed for a given diagnosis)

MEDICAL CANNABIS CODE



8. Evaluation of the treatment of medical cannabis by a physician

EVALUATION OF TREATMENT

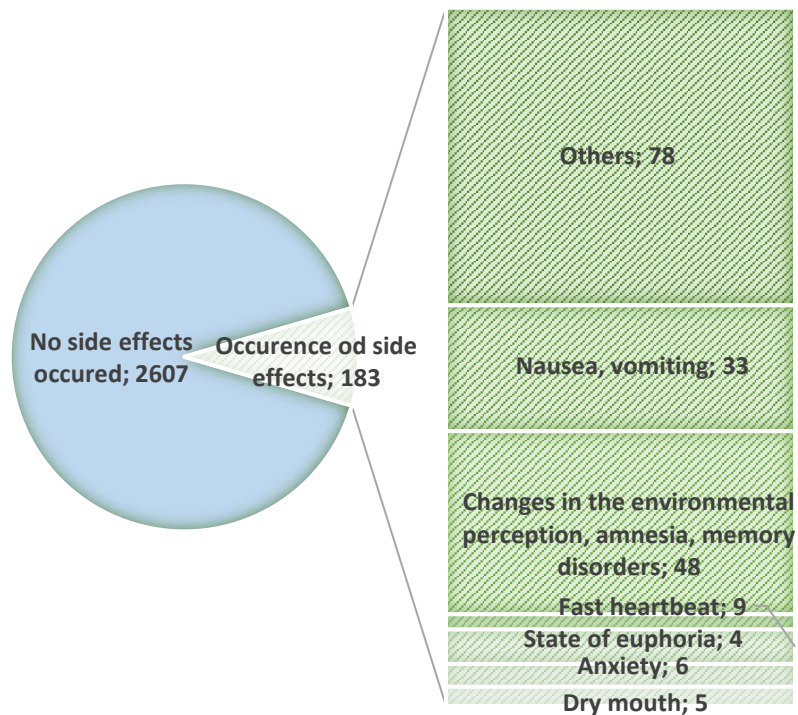


9. Information on the side effects that occurred during the treatment with an individually-prepared medicinal product containing medical cannabis

No side effects occurred: 2607 reports from physicians

Occurrence of side effects: 183 reports from physicians

SIDE EFFECTS



10. Reasons for discontinuing medical cannabis treatment

Treatment with medical cannabis has not been stopped: 2149 reports from physicians

Treatment with medical cannabis has been stopped: 641 reports from physicians

DISCONTINUATION OF TREATMENT

